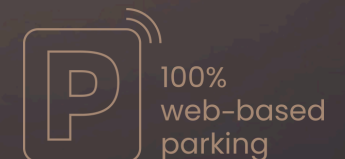


Xperience

IP2 ACCESS

complete

- Full-service access control
- Seamless integration
- Versatile mounting
- Indoor & outdoor usage



IP2 ACCESS complete

Xperience full-service access control for a.o pedestrian doors and speedgates with the IP2 ACCESS complete. Designed in line with the IP2 series, offering seamless integration with various readers and user interfaces including digital payment modules for access by debit and credit card. The IP2 ACCESS complete has four versatile mounting styles: Full flush, Semi flush, Wall mount, and Floor mount while the front-facing cabinet ensures seamless and hassle-free maintenance.

Standard

- IP2 line housing including contour light for Semi flush and Wall mount
- IP2 line housing without contour light for Full flush
- 7" TFT touchscreen
- Front door with cylinder lock
- Aluminium housing with anti corrosion treatment and powder coat finish
- Housing in RAL9004 and RAL9007

Optional

- Barcode/QR code open air scanner
- Modules for debit and credit card processing
- Multi tech prox card reader
- Pinhole camera with high resolution
- Intercom with VoIP or SIP communication via TCP / IP
- Physical intercom button
- Housing in RAL color of choice
- Raised base for a freestanding solution
- Foundation for a freestanding solution

Dimensions

Semi flush / Wall mount:

- 677 (H) x 345 (W) x 176.5(D) mm
- 26.65 (H) x 13.58 (W) x 6.95 (D) inch

Full flush:

- 650 (H) x 345 (W) x 176.5 (D) mm
- 25.59 (H) x 13.58 (W) x 6.95 (D) inch

Floor mount

- 1670 (H) x 365 (W) x 176.5 (D) mm
- 65.75 (H) x 13.58 (W) x 6.95 (D) inch



Semi flush | Wall mount



Full flush



Floor mount



Power supply
110 - 230 VAC



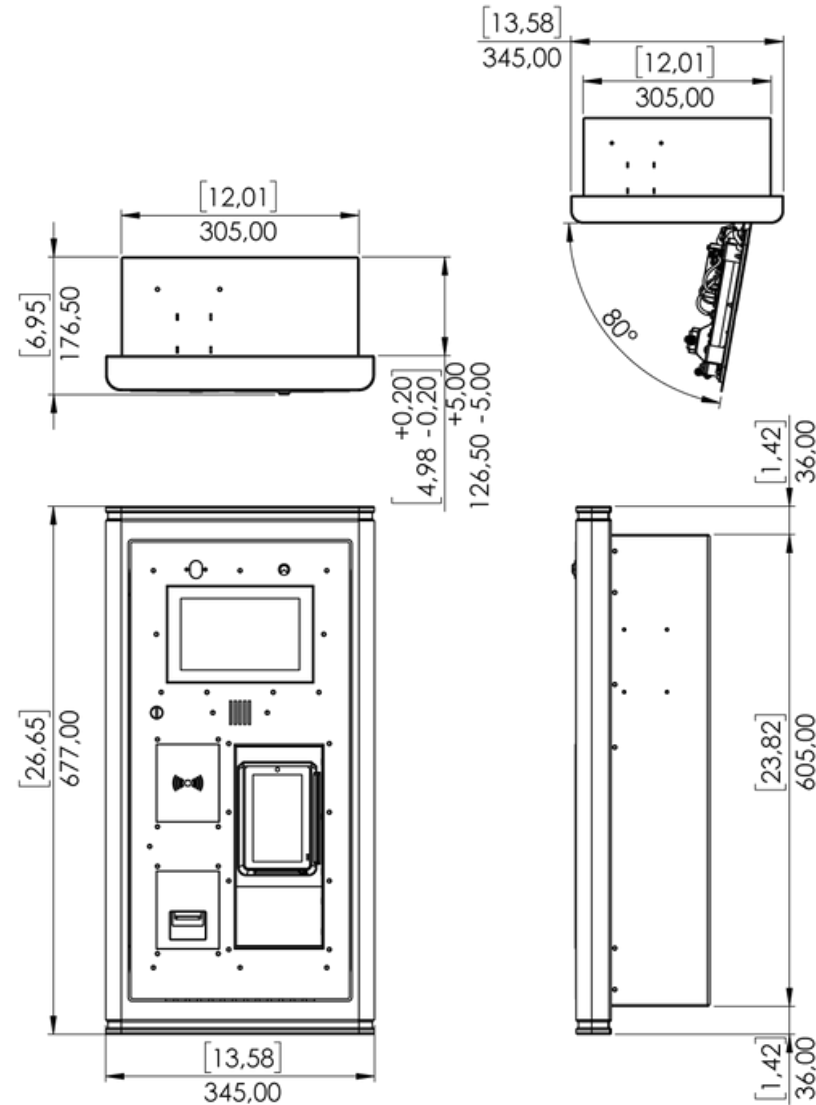
Max. consumption
70 VA



Weight
~ 13 kg
~ 28,66 lb

IP2 ACCESS complete

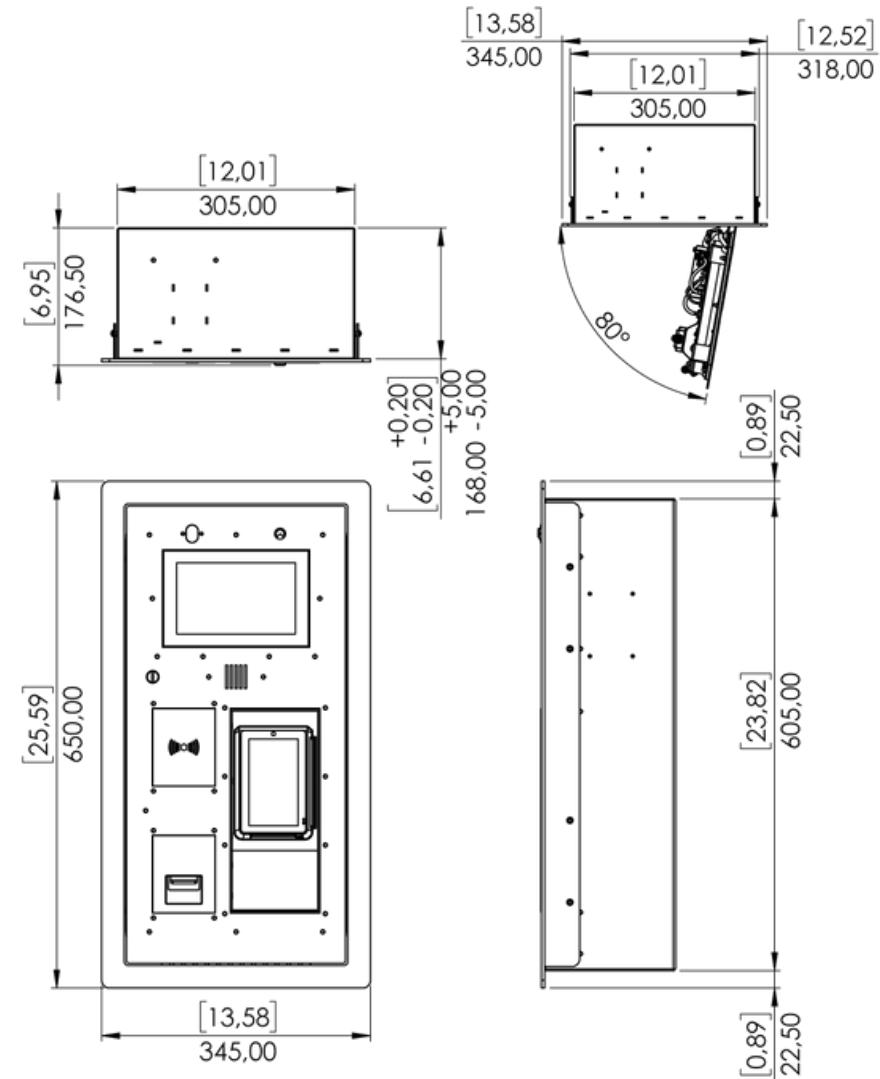
Semi flush | Wall mount



Measurements in MM and [inches]

IP2 ACCESS complete

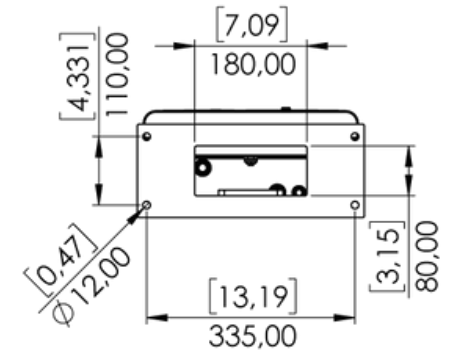
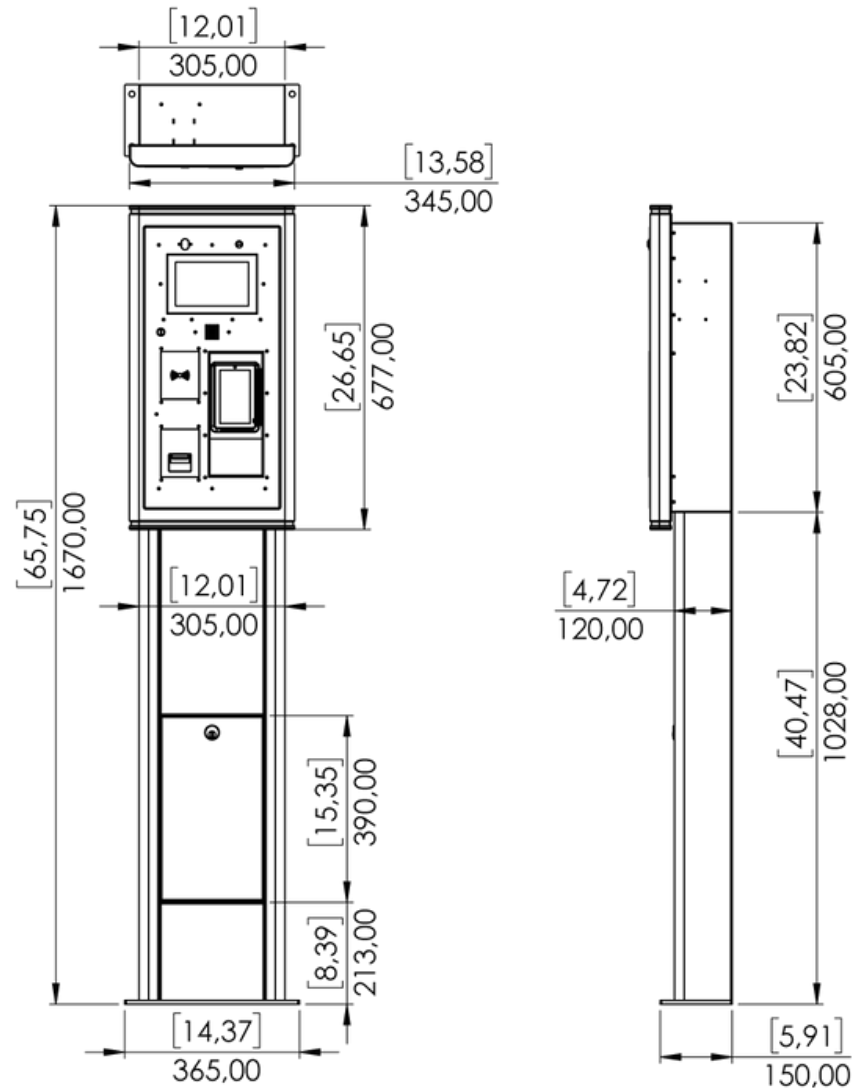
Full flush



Measurements in MM and [inches]

IP2 ACCESS complete

Floor mount



Measurements in MM and [inches]